

ARBORCLAD CLADDING SOLUTIONS

Dare to be different





STAND OUT FROM THE CROWD

Dare to be different with ArborClad's specialist collection of the highest quality, sustainable cladding products. Perfect for any application, the range will help make your project unique.

ArborClad is committed to supplying the highest quality, sustainable cladding products. Working with industry leading manufacturers alongside their own specialist manufacturing facilities.

At the heart of the ArborClad external cladding range is the environment. Chosen specifically for their environmental qualities, Chain of Custody is commonplace across the entire range upon request.



The mark of
responsible forest
management



DEVELOPED WITH YOU IN MIND

With one of the most comprehensive ranges of timber cladding available on the UK market today, ArborClad timber cladding can help transform a project from 'everyday' into a dramatic design statement.

From concept to completion, we work regularly with architects, local builders, renovators, major contractors and national house builders to ensure that the product specified is the right product for the right situation and at the right price.



EXPERIENCE YOU CAN RELY ON

Based on years of experience, ArborClad specialises in creating traditional and bespoke timber cladding solutions to exacting specifications. Computer-controlled cutting machines allow precision profiling in manufacture, providing a truly bespoke service.

Traditional designs through to more elaborate requirements are catered for by our team, who provide a timber cladding solution that not only meets your needs but those of your building.

A NATURAL PRODUCT

Timber is a natural product. Its hygroscopic properties mean that, through changes in moisture and humidity, timber cladding may move. Additionally, regardless of type or species, over time turn a silver grey colour through natural oxidation. It can, unless naturally durable or pre-treated, be subject to mould or insect attack. For this reason it is important, when choosing your cladding, that consideration be given to the location, species, treatment and surface finish you require.

LIMITLESS OPTIONS



Bespoke profiles, finishes and sizes are available to match any specification. Our leading computer-controlled cutting facilities ensures precision, accuracy and consistency. The only limit with ArborClad is your imagination.

HELP AND ADVICE



We've over 175 years' experience working with and supplying timber and timber related products. Our team is on hand to answer any queries you may have.



A COMPLETE CLADDING SOLUTION

Timber cladding is being specified today more and more by local authorities, architects and developers for its environmental credentials and for its ease of working, natural beauty, performance and competitive price.

STANDARD PROFILES

Traditional cladding styles and patterns are always going to be in Vogue. For this reason our standard stock range is based on the popular shiplap and offset cladding profiles. It is also why the more traditional Redwood, Larch and Western Red Cedar species are included.

These are timber species with a proven performance and appearance and, alongside the other products in the range, ensure the perfect solution for any installation is available.

DOMESTIC, COMMERCIAL AND REFURBISHMENT

Ideal for commercial, domestic and refurbishment projects, ArborClad cladding range offers a perfect starting point from where you can select the materials most suited to each individual project. The longer a building product lasts the better it is for the environment, especially a critical external envelope component such as cladding.

BESPOKE PROFILES*

We deal with timber on a daily basis, so we know its limitations. We also know that you occasionally want to be different and stand out from the crowd!

At ArborClad we employ skilled woodworking machinists who are able to produce a full range of bespoke profiles to suit even the most demanding of specifications. These bespoke items can be produced, in addition to the timbers featured in the standard cladding range, from a wide variety of other timber species - Green Oak, Sweet Chestnut, Douglas Fir, Cumaru to name a few.

For further details, or to discuss your exact requirements please get in touch and our dedicated team will do their utmost to assist.

*Please note that minimum order quantities may apply.

COMMITTED TO THE ENVIRONMENT

The ArborClad timber cladding range is available with full Chain of Custody certification, providing compliance with government specification for timber from legal and well-managed sources, as well as meeting the requirements of the construction industry's independent third party audit organisations. If this is a requirement please stipulate at time of ordering.





TRADITIONAL CLADDING RANGE / PAGE 8

- / Cost-effective range of durable, resilient traditional claddings
- / Environmentally focused
- / Suitable for a range of applications
- / Treated Redwood, Larch and Western Red Cedar species
- / Bespoke profiles and other species also available
- / Can be fire treated and/or finished with a stain or paint if required.
- / Bespoke profiles and trim available



THERMAL CLADDING RANGE / PAGE 12

- / Softwood/hardwood options
- / Improved stability, durability and performance
- / Increased weather resistance
- / Chemical-free treatment applied through the full board section, virtually eliminating rot and insect attack
- / Environmentally focused
- / Uniformity of product colour in its natural state
- / More even weathering than traditional timber cladding
- / Can be fire treated and/or finished with a stain or paint
- / Bespoke profiles and trim available



BESPOKE CLADDING OPTIONS / PAGE 18

- / Available in rustic, traditional and metal effect finishes
- / No on-site finishing required
- / Range of paint finishes available
- / Can save time & money
- / Environmentally focused
- / End matched profiles
- / Suitable for a range of applications
- / Increased speed of installation
- / Manufacturers paint warranty

THE TRADITIONAL CLADDING RANGE

Our traditional cladding range is a selection of the most popular timber species currently used today in the UK market for exterior cladding. Selected to meet a wide range of budgets the timbers are machined by experts into a wide selection of standard sizes and profiles.

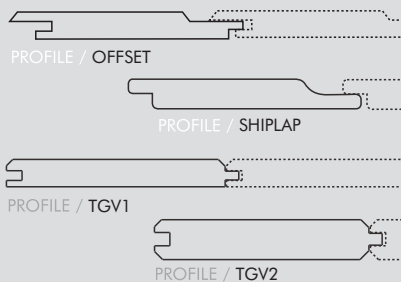
We are also able to provide a fully comprehensive selection of timber species in profiles specific to your exact requirements. Whatever your project requirements, you can be sure of ArborClad's renowned reliability and customer service.

- / Cost-effective range of durable, resilient traditional claddings
- / Environmentally focused
- / Suitable for a range of applications
- / Treated Redwood, Larch & Western Red Cedar species
- / Bespoke profiles and other species also available
- / Can be fire treated and/or finished with a stain or paint if required.



arborClad TRADITIONAL REDWOOD

European Redwood shiplap and offset cladding with square end detail. For use where economy is the priority.



Sizes available (finished sizes shown):
15mm x 119mm in random lengths
19mm x 117mm in random lengths
19mm x 140mm in random lengths

Areas of use:
Refurbishment / Domestic / Commercial

Durability:
Slightly durable. Moderately durable if a finish is applied



SAMPLE SERVICE



ADVICE ON FIRE RESISTANCE

Material density:
520 kg/m³

Natural durability class:
Class 3-4

Bespoke options:
Available in any required profile

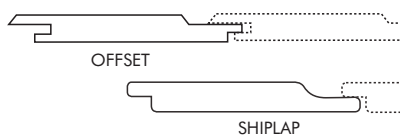
FOR MORE INFORMATION PLEASE CALL 01274 871 411

Sizes shown are finished unless otherwise stated. Subject to stock availability at the time of order. Timber cladding, when left in its natural state, will oxidise and turn a silver grey colour over time, due to the effects of exposure to sunlight.



arbor**Clad**
TRADITIONAL
LARCH

Larch shiplap and offset cladding with square end detail. A highly durable and resilient solution.



Sizes available (finished sizes shown):
19mm x 140mm in random lengths

Areas of use:
Refurbishment / Domestic / Commercial

Durability:
Moderately durable



SAMPLE SERVICE



TECHNICAL ASSISTANCE



OTHER SPECIES AVAILABLE



ADVICE ON FIRE RESISTANCE

Material density:
610 kg/m³

Natural durability class:
Class 3

Bespoke options:
Available in any required profile

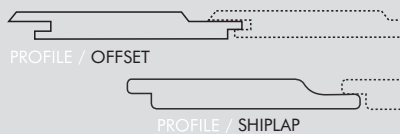
FOR MORE INFORMATION PLEASE CALL 01274 871 411

Sizes shown are finished unless otherwise stated. Subject to stock availability at the time of order. Timber cladding, when left in its natural state, will oxidise and turn a silver grey colour over time, due to the effects of exposure to sunlight.



arbor**Clad**
TRADITIONAL
CEDAR

Western Red Cedar
shiplap and offset cladding
with square end detail.
A highly durable and
resilient solution.



Sizes available (finished sizes shown):
19mm x 140mm in random lengths

Areas of use:
Refurbishment / Domestic / Commercial

Durability:
Durable



Supplied under the **PEFC**
recognised **CSA** standard



SAMPLE SERVICE



ADVICE ON FIRE RESISTANCE

Material density:
370 kg/m³

Natural durability class:
Class 2

Bespoke options:
Available in any required profile

FOR MORE INFORMATION PLEASE CALL 01274 871 411

Sizes shown are finished unless otherwise stated. Subject to stock availability at the time of order. Timber cladding, when left in its natural state, will oxidise and turn a silver grey colour over time, due to the effects of exposure to sunlight.

THERMALLY TREATED CLADDING RANGE

With improved stability and durability qualities, thermally treated cladding provides added long term benefits and flexibility.

Through the treatment applied, the timber is less prone to absorb or lose moisture, helping to restrict the potential for swelling, shrinkage or distortion. The wood also acquires a beautiful brown colour and its velvet-like surface is pleasant to the touch. At its best, the wood possesses nuances of antique and fine wood shades that bring warmth to any project, be this for an internal or external application.

- / Softwood and hardwood options
- / Improved stability, durability and performance
- / Increased weather resistance
- / Chemical-free treatment applied through the full board section, virtually eliminating rot and insect attack
- / Environmentally focused
- / Uniformity of product colour in its natural state
- / More even weathering over time than traditional timber claddings
- / Can be fire treated and/or finished with a stain or paint if required.

Thermal knotty pine / 14

High quality cladding suitable for internal and external use. Available in European Redwood or European Spruce species.

Thermal clear pine / 15

A viable and knot-free alternative to traditional cedar, with the added benefits the thermal treatment provides.

Thermal ash / 16

A deep rich finish and defined grain brings out the best in any application, perfect for exterior and interior use.

Thermal fraké / 17

A viable and knot-free alternative to traditional cedar, with the added benefits the thermal treatment provides.



Also available. Thermally treated timber decking

Our thermally treated Lunardeck range of decking products are an excellent choice to complement any cladding development.

Available in Ash and Redwood species, the range features improved stability and durability qualities, reducing the potential to warp or twist, whilst also helping to eliminate the chance of rot.

Turn to page 21 for more on our range of complementary products.

The thermal treatment process

Heat treatment (within a range of 160°C to 215°C) has the effect of modifying the properties of wood. The thermal treatment process consists of heating wood to temperatures exceeding its spontaneous combustion temperature with the water vapour present having a protective function. A natural process, the varying temperatures, varying treatment duration and varying drying techniques require no chemical additives and impart new properties to the treated wood.

The thermal treatment difference

Through the treatment applied, the timber is less prone to absorb or lose moisture, helping to restrict the potential for swelling, shrinkage or distortion.

During the thermal treatment process, the wood also acquires a beautiful brown colour and its velvet-like surface is pleasant to the touch. At its best, the wood possesses nuances of antique and fine wood shades that bring warmth to any project, be this for an internal or external application.

Focusing on the environment

The ArborClad cladding range has been selected using timbers sourced only from well managed and sustainable forests to ensure that a full Chain of Custody certification can be achieved.

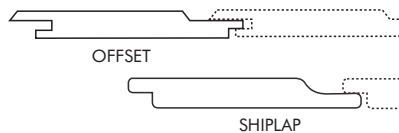
As one of the founder members of the Forests Forever initiative and supporters of wood for good, we feel it is our responsibility to provide environmental solutions for the timber cladding market today.

For further details, or to discuss your exact requirements please get in touch and our team will be happy to assist.



arborClad
THERMAL
KNOTTYPINE

Ideal for long term internal and external applications. Available in European Redwood or European Spruce species.



Sizes available (finished sizes shown):
19mm x 117mm in random lengths
19mm x 140mm in random lengths

Areas of use:
Refurbishment / Domestic / Commercial

Durability:
Durable (Redwood) / Moderately durable (Spruce)

REDWOOD



SPRUCE



SAMPLE SERVICE



ADVICE ON FIRE RESISTANCE

Material density:
420 kg/m³ (Redwood) / 390 kg/m³ (Spruce)

Natural durability class:
Class 3 (Redwood) / Class 3 (Spruce)

Bespoke options:
Available in any required profile

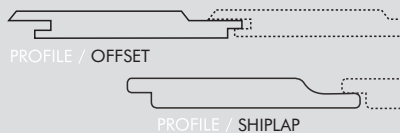
FSC® - Spruce cladding, PEFC - Redwood cladding
Note. Spruce is subject to stock availability

FOR MORE INFORMATION PLEASE CALL 01274 871 411

Sizes shown are finished unless otherwise stated. Subject to stock availability at the time of order. Timber cladding, when left in its natural state, will oxidise and turn a silver grey colour over time, due to the effects of exposure to sunlight.



arbor**Clad**
THERMAL
CLEAR PINE

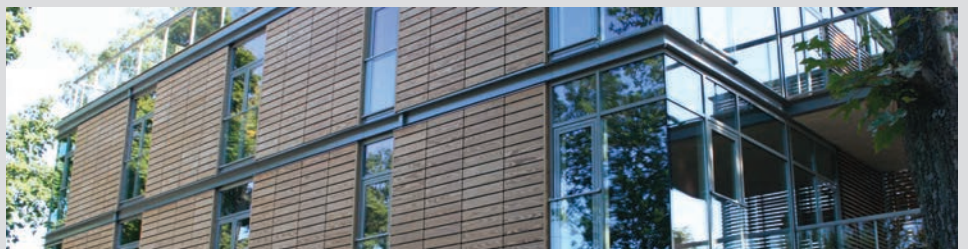


Sizes available (finished sizes shown):
19mm x 140mm in random lengths

Areas of use:
Refurbishment / Domestic / Commercial

Durability:
Durable

Thermally treated Clear Pine cladding provides a viable knot-free alternative to traditional cedar.



SAMPLE SERVICE



TECHNICAL ASSISTANCE



OTHER SPECIES AVAILABLE



ADVICE ON FIRE RESISTANCE

Material density:
490 kg/m³

Natural durability class:
Class 2

Bespoke options:
Available in any required profile

FOR MORE INFORMATION PLEASE CALL 01274 871 411

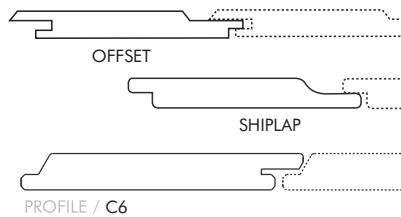
**Available on request, minimum quantities may apply.*

Sizes shown are finished unless otherwise stated. Subject to stock availability at the time of order. Timber cladding, when left in its natural state, will oxidise and turn a silver grey colour over time, due to the effects of exposure to sunlight.



arbor**Clad**
THERMAL
ASH

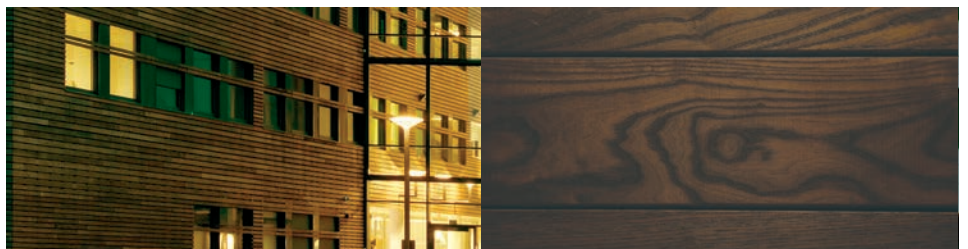
Perfect for exterior and interior use, thermally treated Ash provides a limitless opportunity for design.



Sizes available (finished sizes shown):
Offset/shiplap 19mm x 140mm - random lengths
C6: 20mm x 155mm x 2.4 - 3.6m lengths
C6 can be used in conjunction with clip system

Areas of use:
Refurbishment / Domestic / Commercial

Durability:
Very durable



SAMPLE SERVICE



TECHNICAL ASSISTANCE



OTHER SPECIES AVAILABLE



ADVICE ON FIRE RESISTANCE

Material density:
590 kg/m³

Natural durability class:
Class 1

Bespoke options:
Available in any required profile

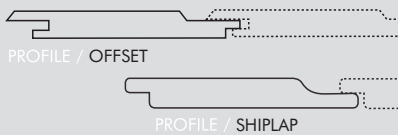
*Available on request, minimum quantities may apply.

FOR MORE INFORMATION PLEASE CALL 01274 871 411

Sizes shown are finished unless otherwise stated. Subject to stock availability at the time of order. Timber cladding, when left in its natural state, will oxidise and turn a silver grey colour over time, due to the effects of exposure to sunlight.



arbor**Clad**
THERMAL
FRAKE

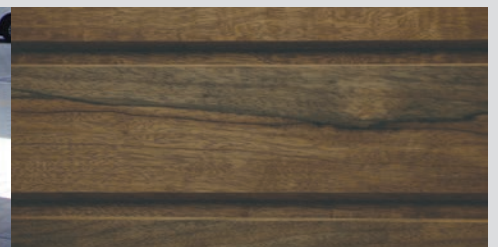
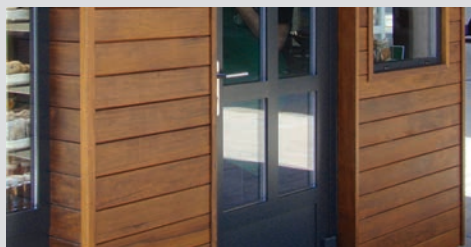


Sizes available (finished sizes shown):
19mm x 140mm in random lengths
19mm x 190mm in random lengths

Areas of use:
Refurbishment / Domestic / Commercial

Durability:
Durable

Perfect for exterior and interior cladding, Fraké is a premium heat modified timber species



SAMPLE SERVICE



TECHNICAL ASSISTANCE



OTHER SPECIES AVAILABLE



ADVICE ON FIRE RESISTANCE

Material density:
500 kg/m³

Natural durability class:
Class 2

Bespoke options:
Available in any required profile

FOR MORE INFORMATION PLEASE CALL 01274 871 411

*Available on request, minimum quantities may apply.

Sizes shown are finished unless otherwise stated. Subject to stock availability at the time of order. Timber cladding, when left in its natural state, will oxidise and turn a silver grey colour over time, due to the effects of exposure to sunlight.

BESPOKE CLADDING OPTIONS

Benefitting from a controlled factory environment for painting and drying, our bespoke cladding ranges provides choice and flexibility and ensures a high quality finish.

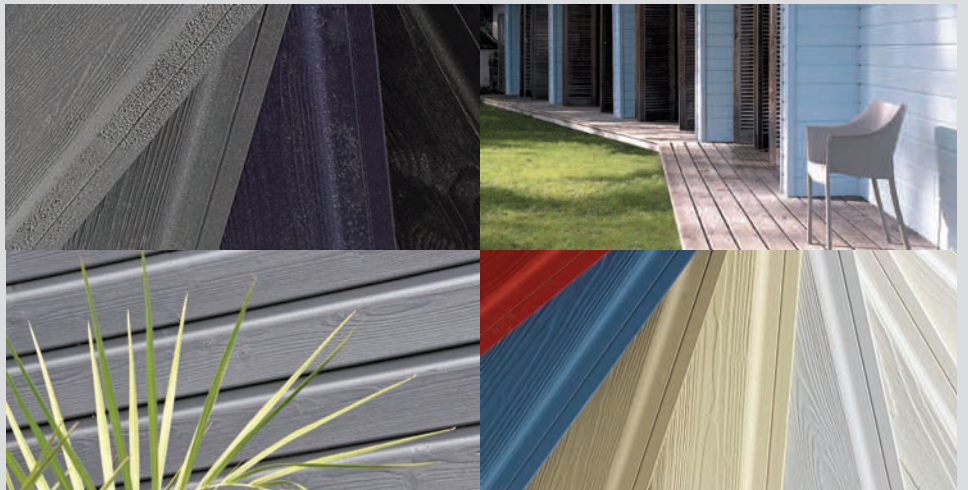
Arriving ready to install, protected against stain and mould formation and the harmful effects of UV radiation, painted or stained cladding offers a straightforward and effective solution. Available in a generous range of standard* and to order colours and finishes, it's simple to specify the exact cladding solution for your needs.

- / Available in rustic, traditional and metal effect finishes
- / No on-site finishing required
- / Range of paint finishes available
- / Can save time & money
- / Environmentally focused
- / End matched profiles
- / Suitable for a range of applications
- / Increased speed of installation
- / Manufacturers paint warranty



arbor**Clad**
BESPOKE

Choose from a range of standard* and to order colours and finishes. Please contact us for more information



SAMPLE SERVICE



TECHNICAL ASSISTANCE



RANGE OF COLOURS AVAILABLE



ADVICE ON FIRE RESISTANCE

FOR MORE INFORMATION PLEASE CALL 01274 871 411

Sizes shown are finished unless otherwise stated. Subject to stock availability at the time of order. Timber cladding, when left in its natural state, will oxidise and turn a silver grey colour over time, due to the effects of exposure to sunlight.

COMPLEMENTARY PRODUCTS

ArborClad timber cladding can also provide a full range of complementary products and accessories to make sure that your project has the result and finish you need.

Internal or external corner angles, quadrants, window boards, window linings, plus one of the largest ranges of timber and composite decking are all available, machined to your project specification and individual requirements. We also offer a full range of stainless steel fixings to ensure your project will endure and stand the test of time.



And unlike many other manufacturers we are able to accommodate smaller quantities as well as large scale orders, to suit any size of development.



Thermal Redwood cladding

COMPLEMENTARY PRODUCTS

Thermally treated timber decking

The Lunardeck range of decking products, which are also thermally treated, make an excellent choice to complement any cladding development. Thermally treated products are widely used on decking projects in Scandinavian countries due to the lack of chemical treatments in their production and because the uniform golden colour achieves an exceptionally clean appearance.

Lunardeck Redwood gives an almost hardwood appearance at a softwood price and, as you can see from the Mercia Marina project shown above and on page 28, complements even the most prestigious development.

Lunardeck Ash decking is provided end-matched to reduce wastage and is regularly specified on high end developments where quality and appearance are paramount.



INSTALLATION GUIDELINES

Timber is a natural product and providing it is treated in accordance with the manufacturers recommendations it will remain looking good and will last a lifetime. The following installation guidelines are additional areas you may wish to consider when selecting and fitting your external cladding. For further information please refer to the manufacturers recommendations.

Note. All advice on installation meets or exceeds those currently provided in BS 8605-PART 1

Part 1. The basic rules for installing cladding

Fixing external cladding

Softwood

Stainless steel annular ring shank/round head nails are appropriate for fixing softwood cladding:

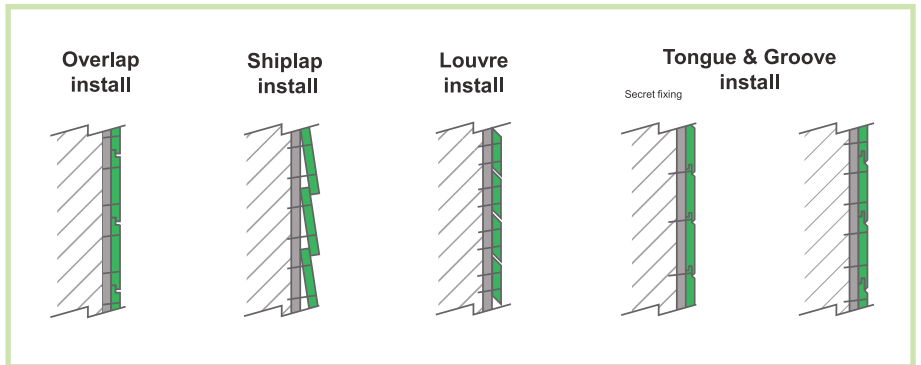
- The nail length is generally minimum 50mm or 2.5 times the thickness of the board being fixed whichever is the greater and should be punched slightly below the wood's surface.
- Boards over 100mm wide should have double fixings.
- Make sure that butt joints always meet on sufficient batten support width (see below).
- It's preferable to use stainless steel nails for all species but especially those with a high tannin content, and they are essential for timbers installed 'green'. By using Stainless Steel this avoids permanent staining due to the reaction of the tannin on mild steel or galvanised nails.
- If using battens*, we recommend a minimum size of 38mm x 50mm (finished size).

Hardwood

Stainless steel screws/annular ring shank nails are the preferred method of fixing for hardwood boards. Stainless steel screws are preferable, and essential for timbers installed 'green':

- Slight over-drilling of the screw holes will allow for any movement in the wood and prevent splits. Countersinking screws is also recommended.

- Where 'green' wood is used, it may be necessary to fit washers to the screws to maintain the fixing security. This can become a design feature.
- Metal clips, which also provide a 'secret fix' effect, may also be considered. Screw fixings should be minimum 40mm or half the width of the board, whichever is the great, from the end of the boards to avoid splitting.



Timber cladding must be able to fulfil several roles:

- **An aesthetic role:** It is the finishing touch to a new build or an advantageous solution to renovation project
- **A mechanical role:** Resistance to knocks & to eventual abrasion: the choice of species, the profile, the finish & style of installation are determining factors
- **A functional role:** Waterproofing in conjunction with the waterproof membrane, thermal insulating as a result of the natural timber & the air gap

Battens: Secondary frame

Timber battens generally need to allow for a fixing length which is minimum 50mm or 2.5 times the thickness of the board being fixed.

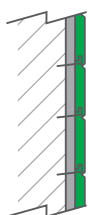
We recommend minimum batten size of 38mm thickness and for these to be pressure treated with suitable preservative.

- Fixing of battens:
- Stainless steel wood screws
 - Stainless steel nails
 - Anchors (Concrete walls)

Treatment:

- Minimum Class II – Class 3 in the case of a louvre type installation

* If fixing of battens is on a continuous support (Board)
** Distance between 2 battens & 2 fixings of the same batten



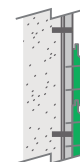
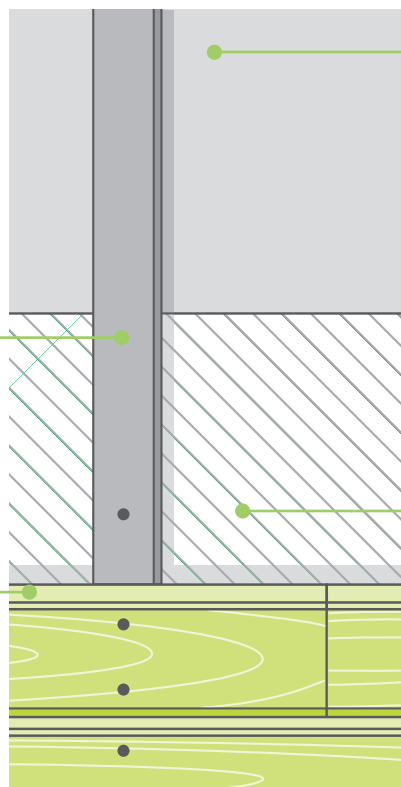
Fixing of cladding

- Stainless steel
 - Annular ring shank nails
 - Small round headed
 - Stainless steel screws
- 2 fixings over the height of the board except
 - Board cover width < 100mm (1 secret fixing 25mm from lower edge of the board)
 - ArborClad pre-finished traditional and prime 1 secret fixing at the top

Joints

ArborClad pre-finished products are assembled by means of tongue and groove on the edges. In such cases, a joint can be located between battens without any problems. All other ArborClad products are square-edge.

* Except bevel sidings. Channel cladding, cladding planks made of Norway spruce: The joints must be positioned on the battens



Its the waterproof membrane which assures the façade is waterproof.

- Wall
- Brick & block
 - Timber frame
 - Concrete

Air Gap

- Minimum thickness: 1cm
 - Ventilation (1 opening for ever 2 floors minimum)
 - Non-restricted air entry & exit, minimum section 50cm² per metre of cladding
 - The timber battens must not restrict the circulation of air
- See part two on opposite page

Waterproof membrane

- Compulsory (Except on poured concrete walls or walls already waterproof)
- Minimum permeability: 0.5g/m².h.mm Hg
 - Fixing by means of timber batons
 - Minimum overlap: 5cm horizontal joints 10cm vertical joints
 - Foresee a UV resistant waterproof membrane in case of a louvre type installation.

NB: Waterproofing is not the primary function of cladding

Part 2. Types of cladding installation

Board sizes

Horizontal boards:

- Shiplap or feather edge type boards should have a minimum of 10mm overlap, but allow 2mm gaps between the upstands for movement in the timber.
- Tongued and grooved boards should have a maximum face width of 150mm, with a 2mm clearance above the tongue for expansion. Most commercially produced profiles will include these tolerances. Install with the tongue upwards.
- Open joint boards should have an 8-15mm gap at the 'water face'. Chamfered edges allow the boards to overlap slightly, reducing any exposure of the cavity.

Vertical boards:

- The face width of vertical boards should not exceed 150mm. The most versatile fixing method is board on board. Any overlap should be a minimum of 20mm.

Diagonal boards:

- Should be fixed on battens, as for vertical boards, taking into consideration the comments above for overlaps or tongue and groove styles.

Using battens

NOTE: We recommend a minimum batten* size of 38mm x 50mm (finished size).

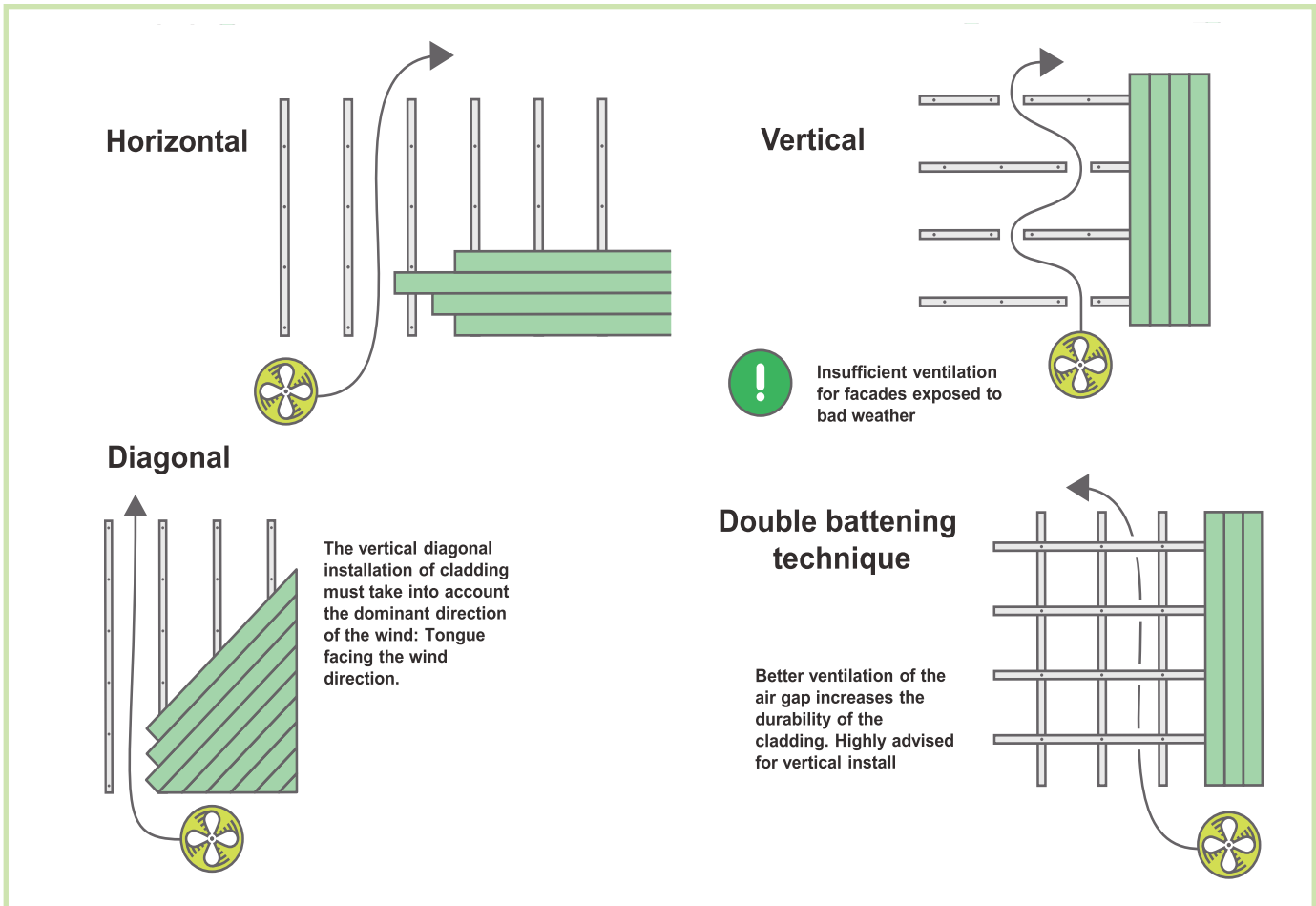
Use battens that are preservative treated and structurally graded to ensure they are able to carry the weight of the board material. Fix horizontal boards to vertical battens, taking care where boards are jointed to ensure they sit securely on sufficient batten width. Conversely, fix vertical boards to horizontal battens, with vertical 'counter' battens to facilitate drainage and ventilation. Support battens should be fixed at spacings of no more than 600mm, whether vertical or horizontal. And at no more than 400mm for diagonal boards.

These spacings will maintain the overall stability of the cladding.

Remember the cavity

The timber cladding you are fixing to the building is effectively an outer layer of protection against the elements. However, a cavity should be formed behind the cladding to allow any water or moisture that might penetrate the cladding to escape. This ensures internal and external surfaces of the wood maintain a similar moisture content, reducing the potential for movement and distortion, allowing ventilation between the inner and outer surfaces.

The cavity should be at least 19mm wide, but may be wider, depending on the thickness of fixing battens. A weatherproof membrane is usually required to protect the structure, although this may not be needed on masonry. Additionally, if not sealed a fly screen membrane should also be used to prevent insect infiltration.

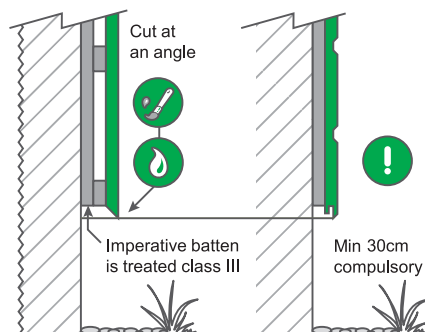


Part 3. Precautions for bottom fixing



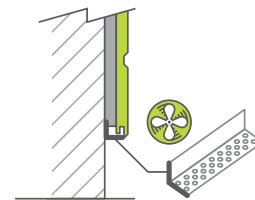
Treat cut ends with timber preservative

Vertical install Horizontal install



The spray of water risks keeping the lower boards constantly humid. It is advised to leave the ground uncovered (at the foot of the wall) or to cover with stones/gravel

Aeration grill "Anti-rodent"



Regardless of the system used to finish off the lower cladding board, it is necessary to have at least 50 cm² of air inlet per metre on a façade covered in cladding

Part 4. Cladding details

Window and door openings

Openings within a wall require special attention to avoid the need to notch or split the boards. These openings need to be dimensionally compatible with the cladding to provide a good appearance as well as allowing for fixings. Thought also needs to be given to the 3-dimensional relationship of any flashings, sills etc. to allow for adequate drainage of water from the cladding surface and board ends.

Corner details

This is an important area of fixing detail, not just aesthetically but functionally, to ensure adequate protection against water.

Mitring boards at corners is not recommended for pre-finished products, as natural movement of the timber will allow the joint to open, causing failure of the surface coating and water ingress.

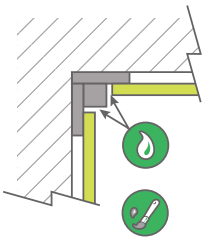
Mitring the ends of boards can be considered, but it is advisable to provide a gap between any adjoining surfaces and pre-finishing/treating all exposed ends.

Internal and external corners are more easily detailed on vertical boarding. These can be jointed by 'tonguing and grooving' to give added stability and protection.

Solutions for internal cladding angles

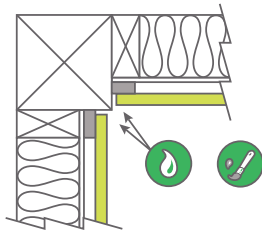
Timber allows for a wide variety of design options for finishing. These can be simple solutions or bespoke profile manufacture. Below are just a few commonly used solutions for forming internal angles.

Solution for an internal angle

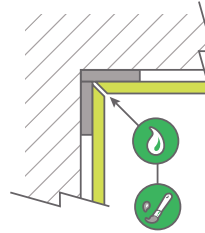


Possibility to highlight the corner by changing colour

Timber frame with a column corner

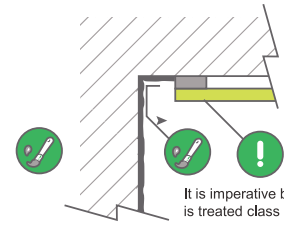


The most discrete: Mitre joint



It is imperative to align the cladding from one wall to another

Cladding / render joint



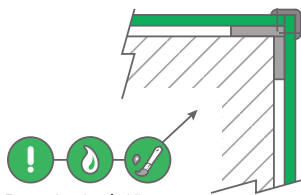
It is imperative batten is treated class III

Re-paint all cuts
Retreat the cuts (Insecticide & fungicide product) in the event of using a Norway spruce cladding

Solutions for external cladding angles

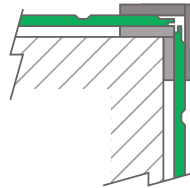
Timber allows for a wide variety of design options for finishing. These can be simple solutions or bespoke profile manufacture. Below are just a few commonly used solutions for forming external angles.

The most used, the least discrete



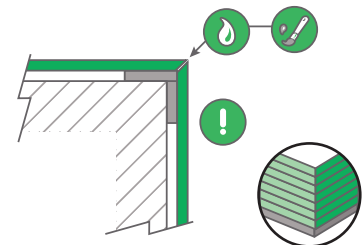
Remember the cladding cuts behind the corner

Suggestion for highlighting a corner



Possibility to change colour

The most discrete: Mitre joint



Risk of water retention

• Cuts must definitely be retreated or repainted
It is via the cuts when they are not protected that the cladding deteriorates (Humidity retention & rotting)

Part 5. Profile lay and coverage per sqm (finished sizes)

	Cover size	lmt /m2		Cover size	lmt /m2
15 x 119mm shiplap	109mm	9.10	19 x 147mm secret-fix	122mm	8.19
15 x 119mm T&G	112mm	8.90			
19 x 117mm shiplap	100mm	10.0	19 x 190mm shiplap	175mm	5.70
19 x 117mm offset	95mm	10.5	19 x 190mm offset	170mm	5.88
19 x 117mm T&G	112mm	8.90	23 x 145mm offset	120mm	8.30
19 x 140mm shiplap	125mm	8.00			
19 x 140mm offset	120mm	8.30			
19 x 140mm T&G	135mm	7.40			

Please note: All offset profiles allow for installation by secret-fixing or secret-fix offset. For further information or advice please contact us.

EXTERNAL TIMBER CLADDING AND FIRE

Timber is approved as a suitable material for external cladding under UK Building Regulations and where these regulations call for enhanced fire performance, tried and tested flame retardant treatment processes are available to provide it.

ArborClad works with PTG Treatments, a company dedicated to providing timber protection solutions and the leading provider of treatment and coatings service in the UK.

Introducing Sentrin FRX

Sentrin FRX fire retardant treated timber has been pressure impregnated with a leach resistant (Type LR), exterior grade fire retardant formulation. It has been processed under ISO9001 controlled factory conditions to provide confidence in performance and long lasting protection without further maintenance, even in fully weather exposed situations.

Treated timber can meet the requirements of national Building Regulations where Euroclass B or C are required and will significantly reduce the spread of fire, heat generation and smoke generation. These fire performance properties do not compromise critical engineering properties such as strength, durability, corrosivity and hygroscopicity.

Look and appearance

Treatment with fire retardant in general, does not alter the appearance of the timber or wood based panel. Some slight darkening may occur which will be dependent on the timber species and the kiln drying process following treatment. There may also be some surface deposits which will not affect the fire performance. It is recommended that representative samples are processed prior to full scale treatment, especially if a coating is to be subsequently applied.

Service life

Sentrin FRX treated wood products are designed to perform for the life of the building or structure and require no maintenance. Treated timber has maintained its fire performance in the ASTM D2898 accelerated weathering test, used to approve leach resistant, exterior grade fire retardant treatments.

Applications

For use in above ground and exterior applications such as cladding, decking, shingles, exposed structural timber and playground equipment. Timber can be exposed to weathering without compromising the fire performance. If a coating is required for aesthetic reasons, Sentrin Chromacoat can be factory applied. Other coating systems may not be suitable and must be tested prior to application.

More information and specification

Please contact us for more information and assistance.

Further timber treatments* available: timber preservatives, priming, staining. Ask for details.

*Dependent on specification, ask for details.



Note. In the event you wish to apply a surface finish to your cladding that has been fire treated please ensure that you have confirmed products being used are compatible. Failure to do this could result in poor quality of finish and delamination may occur. ArborClad can provide advice and suitable finish options that are proven and tested to ensure quality and finish are maintained.



ORCHARD CARE HOME

ArborClad Thermal Clear Pine

The newly-constructed £32 million Richmond Witney Retirement Village was designed by PRC Architecture and built by BAM. The design called for a village atmosphere, with architectural features that reflect the local vernacular.

Howarth Timber's ArborClad Clear Pine cladding was specified because of its attractive appearance and sustainability benefits, and is incorporated across entire elevations on selected buildings and as a unifying factor on others. As well as supplying the Clear Pine cladding, Howarth Timber machined to profile and finished the corner moulds and fascias, providing a streamlined service.

The thermally modified timber cladding is virtually knot-free, while the non-chemical treatment makes the cladding resistant to moisture and means that it won't warp or swell and will weather evenly to a clean silver-grey colour.

Clear Pine requires minimal maintenance and is available PEFC certified on request. Its low cost and attractive aesthetic make it a viable alternative to more expensive Western Red Cedar, which is often specified for its largely further limits its environmental impact. Properly fitted, Clear Pine will last for a very long time which makes it an ideal choice for this project."

The retirement village comprises a 60-bed village care centre, 47 care suites with associated accommodation and 79 close care apartments. The village also includes a wellness spa and restaurant to provide independent living for older people.





MERCIA MARINA, DERBYSHIRE

*ArborClad Thermal
Redwood cladding*

*Lunardeck Thermal
Redwood decking*

The Mercia Marina, in Derbyshire, is Europe's largest inland marina and boasts a plethora of biodiversity and wildlife. Howarth's cladding and decking was selected to suit the surrounding natural environment whilst ensuring a sleek appearance in its high profile location.

The high quality thermal redwood cladding, which was installed at The Boardwalk - the marina's retail accommodation - co-ordinates aesthetically with the thermally treated Lunardeck redwood decking which was also selected for the marina.

Not only was the premium thermally treated redwood chosen for its aesthetic properties, it was also specified due to the lack of use of chemicals during production, which enhances the

environmental qualities of the building. It was also bespoke to the project, having been UV treated and then brushed to reveal the grain.

Further benefits of the cladding and decking include its ability to maintain the same size and shape, its durability, stability and strength. The timber is PEFC certified and has a decreased risk of mould and improved thermal and hygiene qualities.

Along with this, the timber offers improved wood preservation and weather resistance and can be painted, stained and fire treated to class 0.



ROSSALL POINT OBSERVATION TOWER, FLEETWOOD

ArborClad Thermal Fraké



When specialist timber was required to complete the RIBA Award-winning Rossall Point Observation Tower in Fleetwood, cladding from Howarth Timber & Building Supplies was specified.

The tower, on the Lancashire coast, is owned by Wyre Borough Council and gives visitors the opportunity to learn about the coastal environment and enjoy the view over Morcambe Bay and the Irish Sea.

ArborClad fraké, a premium cladding from Howarth, was specified for the £570,000 building, which is open to the public. The ArborClad fraké was the ideal choice for Rossall Point, mainly due to the building's coastal location.

Thanks to the way the cladding has been treated, strong, stable elevations are achieved for the building, while the timber is able to withstand demands from the environment due to its durability.

The building, which rises above the sand dunes and has striking aesthetics, was designed to look as if it is leaning into the wind. The stunning tower was recognised for its striking design when it won the RIBA North West Award.





FLEETWOOD CHANGING HUTS

*ArborClad Thermal
Fraké cladding*

Howarth Timber & Building Supplies helped to create 10 new beach chalets on Fleetwood promenade that share the same construction materials as the area's local observation tower.

The colourful chalets have been constructed using fraké timber, which matches the wood - also supplied by Howarth Timber - used to build the nearby Rossall Point observation tower.

Fraké timber is a premium heat-modified timber species that is gaining popularity in cladding projects due to its durability and ease of use.





MARKS AND SPENCER'S BRADFORD, WEST YORKSHIRE

*ArborClad Thermal
Knotty Pine*

Marks and Spencer's new multi-million pound northern distribution centre in Bradford, West Yorkshire, has been completed with a facade of high performance thermally treated Spruce cladding supplied by Howarth Timber & Building Supplies.

The high-technology centre, close to the motorway network, is part of Marks & Spencer's programme to consolidate its existing logistics network. The new low carbon facility has been designed to meet the demands of M&S's environmental initiative, known as Plan A.

The specified timber is a stable, durable and chemical-free cladding solution, as functional as it is aesthetically attractive.

It is sourced from certified sustainable forests and is suitable for both ground and fresh water contact. From its Bradford merchant branch, Howarth supplied over 900m² plus for installation on this prestigious project.

One of a comprehensive number of cladding solutions from Howarth, the timber requires minimal maintenance, is 100% recyclable, has a life expectancy in excess of 30 years and is certified by the Forest Stewardship Council.





COMMERCIAL CLADDING

ArborClad Traditional Larch

The ArborClad timber cladding range is an ideal solution where cost and longevity are key drivers to specification.

Building designers, timber frame manufacturers and specifiers are choosing timber cladding for its inherent qualities and its suitability for use in panel sections and off-site modular construction.

Utilising off-site manufacturing techniques and the latest design technology, panels are able to be transported to site ready for erection, saving both time and associated construction costs. The advantage of producing panels in a controlled environment mean that additional quality control checks can be made and accuracy and quality of installation enhanced before the product has left the factory gate.

Timber cladding, in particular when used with timber frame construction, provides a durable and lightweight finishing option. The result being that the building exterior appears warm, fresh and clean in appearance whilst also benefiting from additional thermal and acoustic performance.

The commercial cladding projects shown on this page, sited in both Wales and Doncaster, utilised over 500m² of ArborClad Traditional Larch cladding, creating a highly durable and resilient exterior.





CAMBOURNE PRIMARY SCHOOL

ArborClad Pre-Finished Rustic

Finished in ArborClad Pre-Finished Rustic cladding, the new temporary buildings that house Cambourne's Third Primary School make a visually dramatic yet environmentally sustainable statement to both school users and the community of which the school is a part.

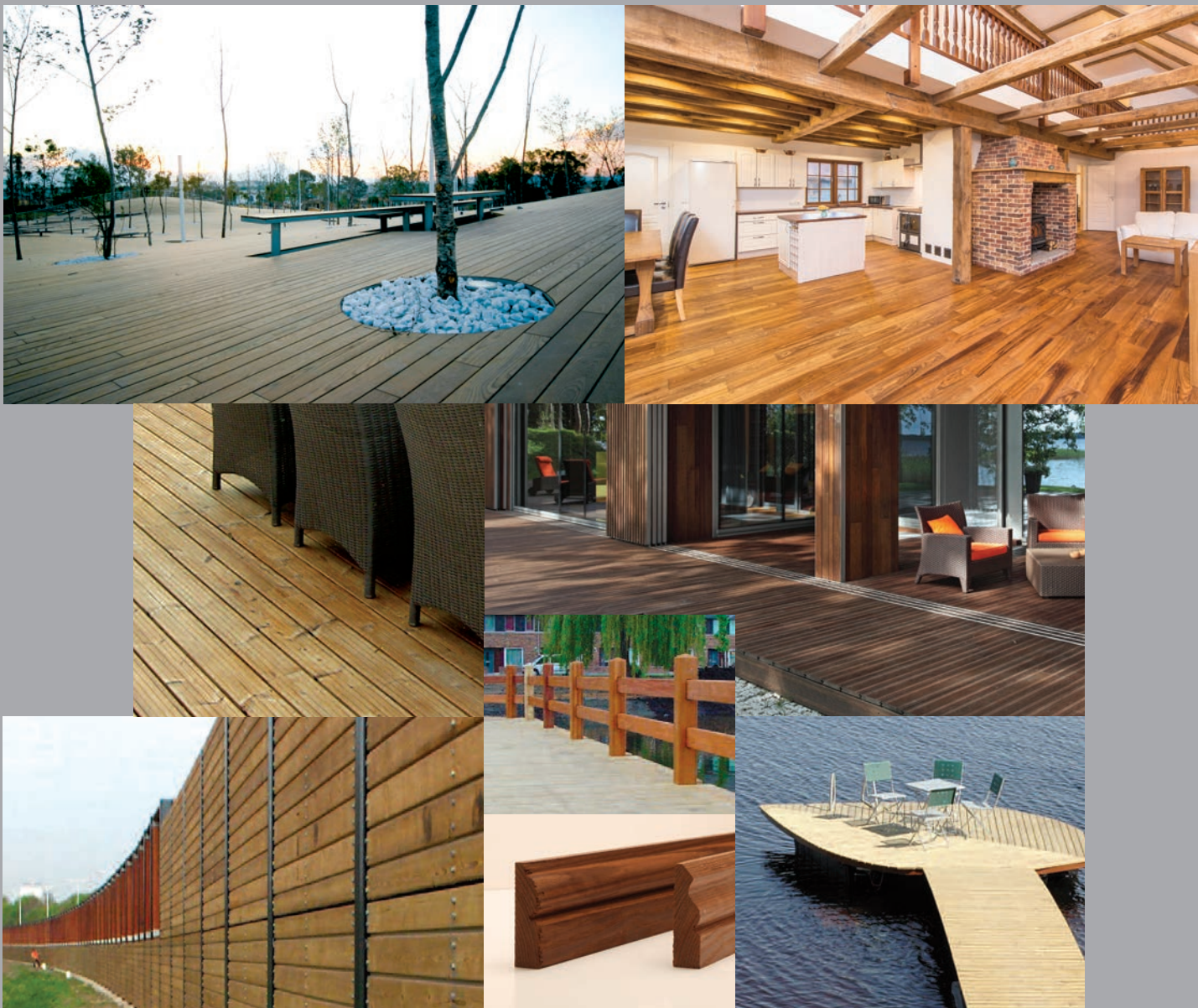
In less than six weeks from receipt of order, the cladding was supplied and delivered to site in a bespoke RAL colour, along with a broad range of specially manufactured joints, corners and finishes to ensure a perfect fit and so that the product retains its weather resistant properties.





EXPLORE THE POSSIBILITIES

With its inherent quality, durability and stability, plus performance and environmental benefits built in thermally treated timber is the material of choice whatever the application.



HERE FOR YOU

THE UK'S LARGEST PRIVATELY OWNED AND OPERATED TIMBER GROUP WITH BRANCHES LOCATED NATIONWIDE



**HOWARTH
TIMBER &
BUILDING
SUPPLIES**

NORTH WEST

Accrington	01254 380 500	sales.accrington@howarth-timber.co.uk
Ashton	0161 330 1634	sales.ashton@howarth-timber.co.uk
Blackburn	01254 699 696	sales.blackburn@howarth-timber.co.uk
Burnley	01282 426 241	sales.burnley@howarth-timber.co.uk
Bury	0161 761 6416	sales.bury@howarth-timber.co.uk
Darwen	01254 873 552	sales.darwen@howarth-timber.co.uk
Manchester	0161 834 8505	sales.manchester@howarth-timber.co.uk
Oldham	0161 620 2128	sales.oldham@howarth-timber.co.uk
Rochdale	01706 710 962	sales.rochdale@howarth-timber.co.uk
Sale	0161 973 9578	sales.sale@howarth-timber.co.uk

YORKS & LINC'S

Barnsley	01226 289 494	sales.barnsley@howarth-timber.co.uk
Bradford	01274 871 411	sales.bradford@howarth-timber.co.uk
Brighouse	01484 503 950	sales.brighouse@howarth-timber.co.uk
Dewsbury	01924 462 186	sales.dewsbury@howarth-timber.co.uk
Grimsby	01472 361 621	sales.grimsby@howarth-timber.co.uk
Doncaster	01302 763 090	sales.doncaster@howarth-timber.co.uk
Harrogate	01423 637 000	sales.harrogate@howarth-timber.co.uk
Leeds	0113 2000 100	sales.leeds@howarth-timber.co.uk
Malton	01653 697 776	sales.malton@howarth-timber.co.uk
Scunthorpe	01724 860 325	sales.scunthorpe@howarth-timber.co.uk
Thorne	01405 813 515	sales.thorne@howarth-timber.co.uk
Wakefield	01924 372 291	sales.wakefield@howarth-timber.co.uk
York	01904 629 931	sales.york@howarth-timber.co.uk

MIDLANDS

Corby	01536 407 079	sales.corby@howarth-timber.co.uk
Derby	01332 360 233	sales.derby@howarth-timber.co.uk
Mansfield	01623 624 455	sales.mansfield@howarth-timber.co.uk
Newcastle	01782 715 900	sales.newcastle@howarth-timber.co.uk

LONDON & SOUTH EAST

Bury St Edmunds	01284 250 160	sales.bse@howarth-timber.co.uk
Dartford	01322 286 844	sales.dartford@howarth-timber.co.uk
London	0208 691 6237	sales.london@howarth-timber.co.uk
Tottenham	0208 808 4337	sales.tottenham@howarth-timber.co.uk

HOWARTH GREENHOUSE

Rochdale	01706 356 230	greenhouse@howarth-timber.co.uk
----------	---------------	---------------------------------

HOWARTH TIMBER ENGINEERED SOLUTIONS

Ashton	0161 339 4581	ashton_enquiry@howarth-timber.co.uk
Brighton	01757 288 300	brighton_enquiry@howarth-timber.co.uk
Bury St. Edmunds	01284 772 700	buryse_enquiry@howarth-timber.co.uk
Fairford	01285 711 600	fairford_enquiry@howarth-timber.co.uk

HOWARTH WINDOWS & DOORS

New Holland	01469 530 577	windows@howarth-timber.co.uk
-------------	---------------	------------------------------

For further information email: info@howarth-timber.co.uk Visit our comprehensive website: www.howarth-timber.co.uk